

PUSH-BUTTON LOCK



Miniature 4-pin tubular push-button lock suitable for sliding doors etc with patented technology. Unlocking with key activates pin on the back that springs into latch - and pushbutton on the front springs out. Push front button to latch.



MATERIAL

Centre spindle: Brass, chrome plated

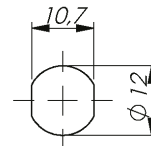
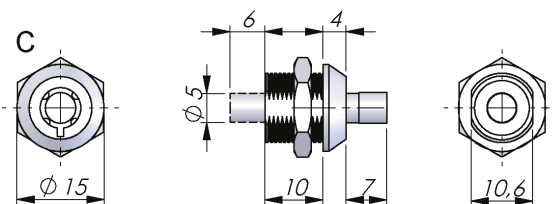
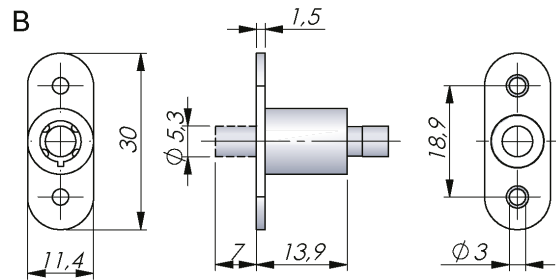
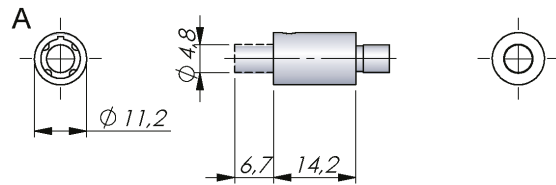
Housing: Zinc die cast, chrome plated

Nut: Brass, zinc plated

TECHNICAL INFORMATION

Key extraction: Open / Closed

Cylinder information: Keyed to differ on request, Supplied with two keys



P/N	Description	Mounting	Drawing
241300-1101.1	Keyed alike	Screw	A
241300-1102.1	Keyed alike	Screw / Rivet	B
241300-1103.1	Keyed alike	Nut (included)	C